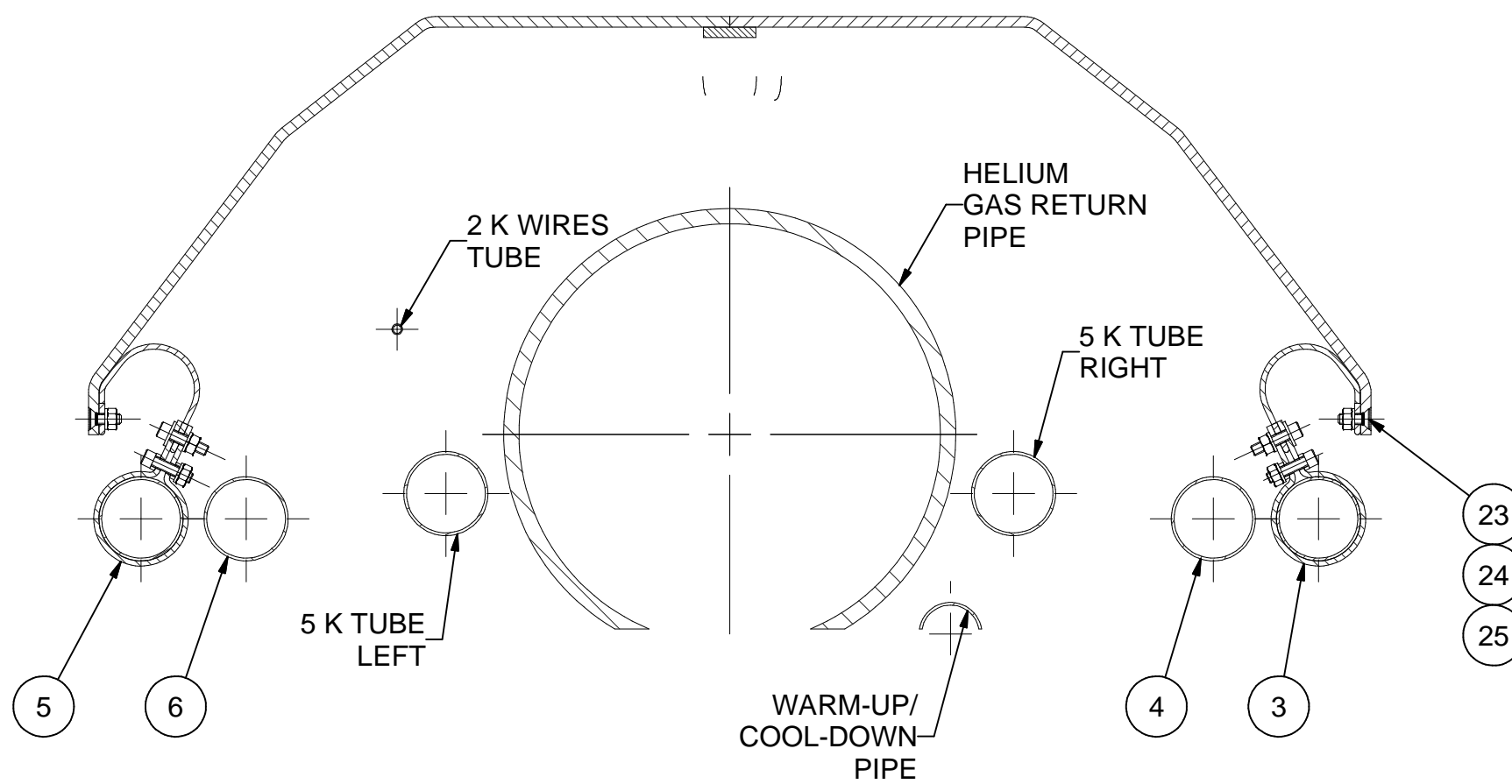
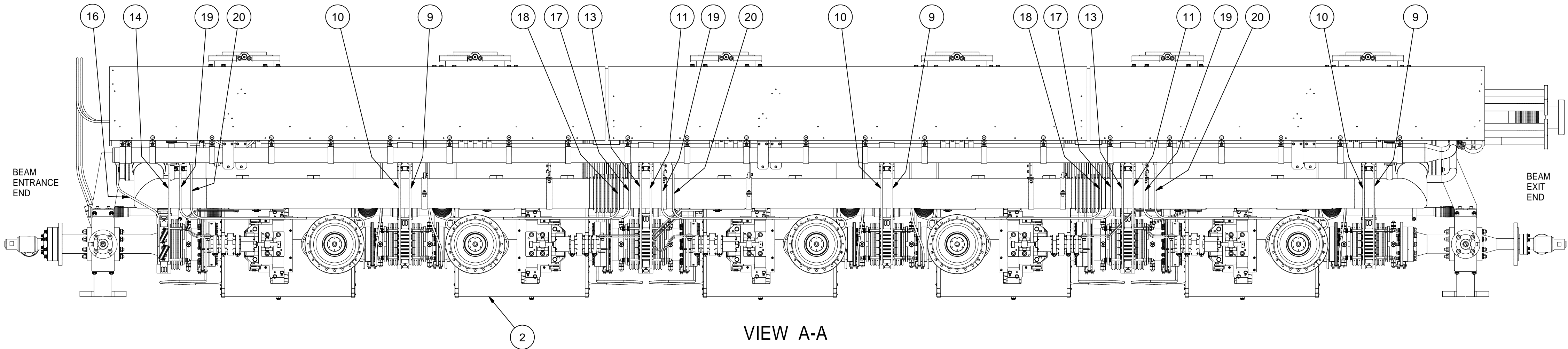
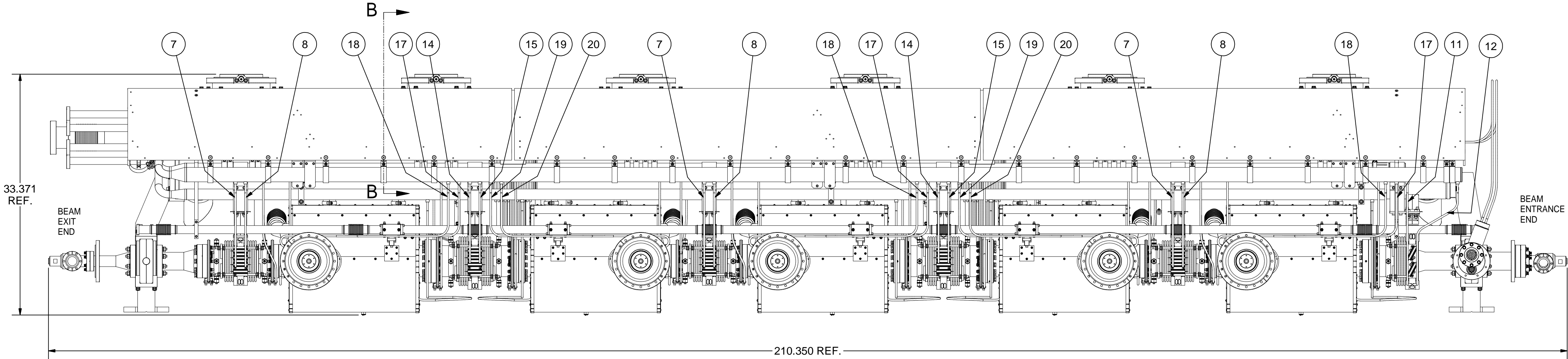
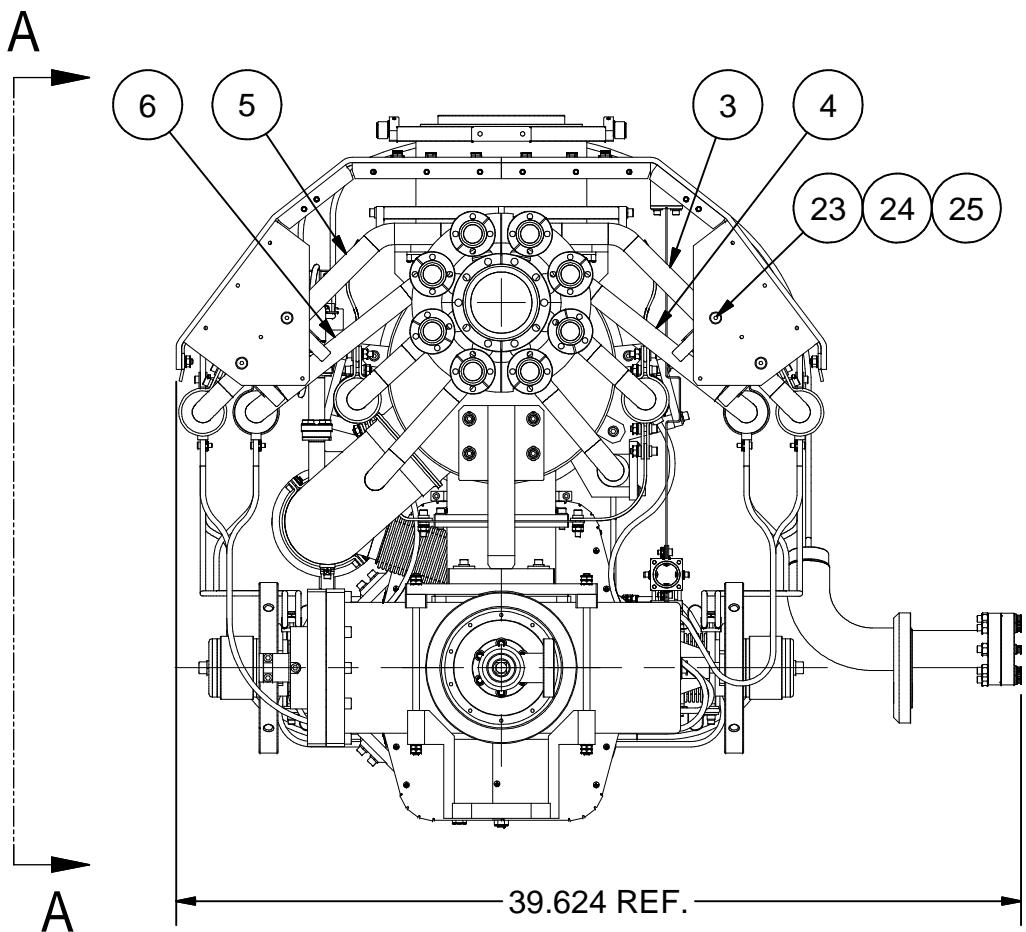


REVISIONS				
SYM.	ZONE	DESCRIPTION	DATE	APP.

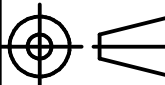





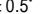




SECTION B-B  
SCALE 1:4

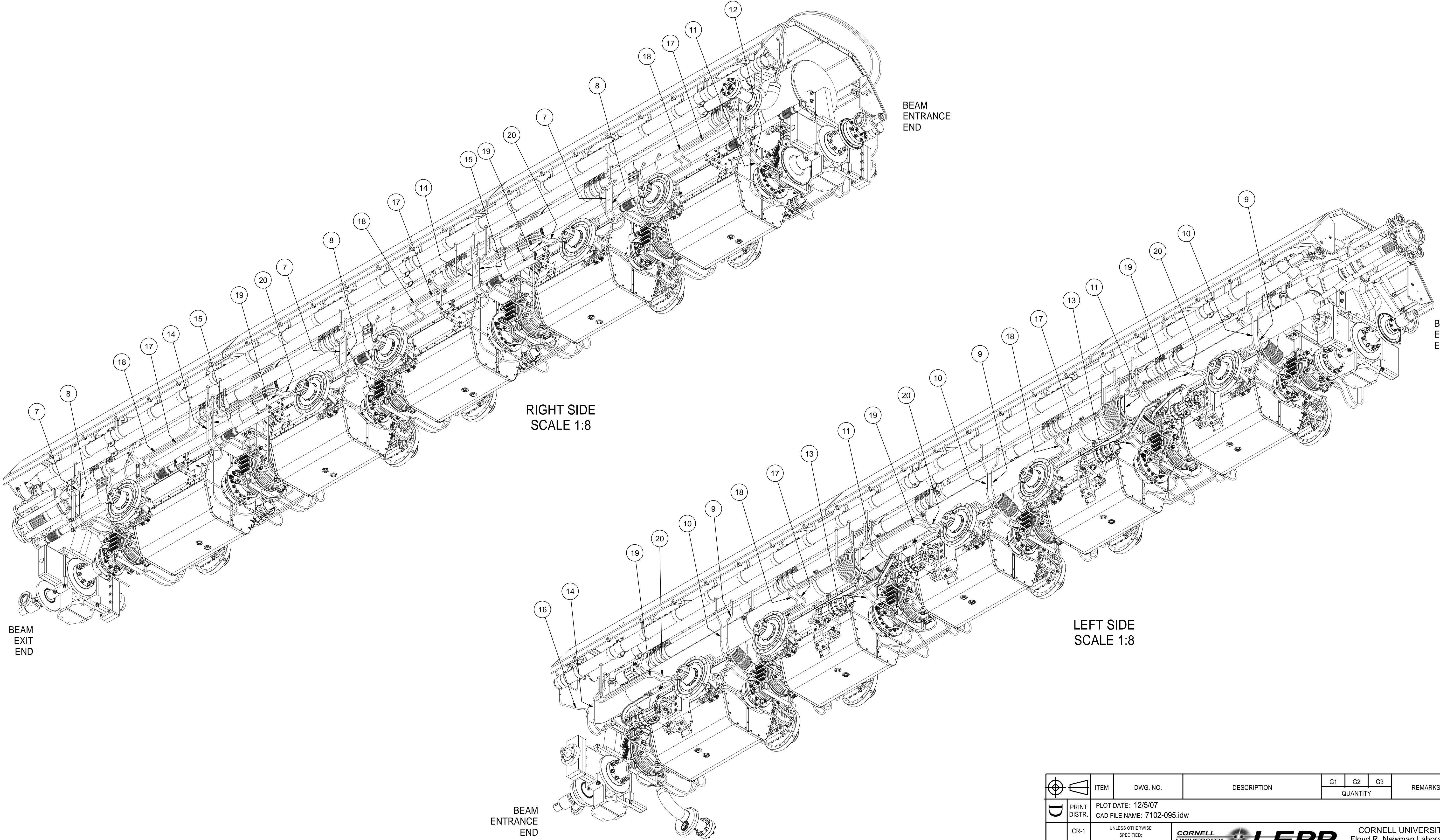
1 ASSEMBLY, STEP 6

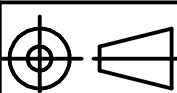

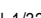


FILE NAME: 7102-095  
SHEET NO.: 1  
DFT. SCALE: 1:9  
MATERIAL:  
QTY: 1 PER CRYOMODULE  
NOTES: 1. SEE NEXT SHEET FOR ISO VIEWS.  
2. WELD JUMPERS 7 THROUGH 20 (SEE THIS AND NEXT SHEETS). TIG UHV WELD.

25	Purchased	1/4 Spring Washer, SS	52		McMaster-Carr's 92146A029
24	Purchased	1/4-20 Hex Nut, Silicon Bronze	52		McMaster-Carr's 93439A610
23	Purchased	1/4-20 x 3/4 Flat Head Hex Socket Cap Screw, SS	52		McMaster-Carr's 92210A540
20	7102-061 (Sh.14)	INPUT COUPLER 80 K COOLING JUMPER OUT-2	5		
19	7102-061 (Sh.13)	INPUT COUPLER 80 K COOLING JUMPER IN-2	5		
18	7102-061 (Sh.12)	INPUT COUPLER 80 K COOLING JUMPER OUT-1	5		
17	7102-061 (Sh.11)	INPUT COUPLER 80 K COOLING JUMPER IN-1	5		
16	7102-061 (Sh.10)	HOM-106-HALF 80 K COOLING JUMPER LEFT-OUT	1		
15	7102-061 (Sh.7)	HOM-106 80 K COOLING JUMPER RIGHT-OUT	2		
14	7102-061 (Sh.7)	HOM-106 80 K COOLING JUMPER RIGHT-IN	3		
13	7102-061 (Sh.8)	HOM-106 80 K COOLING JUMPER LEFT-OUT	2		
12	7102-061 (Sh.9)	HOM-106-HALF 80 K COOLING JUMPER RIGHT-OUT	1		
11	7102-061 (Sh.8)	HOM-106 80 K COOLING JUMPER LEFT-IN	3		
10	7102-061 (Sh.6)	HOM-78 80 K COOLING JUMPER LEFT-OUT	3		
9	7102-061 (Sh.6)	HOM-78 80 K COOLING JUMPER LEFT-IN	3		
8	7102-061 (Sh.5)	HOM-78 80 K COOLING JUMPER RIGHT-OUT	3		
7	7102-061 (Sh.5)	HOM-78 80 K COOLING JUMPER RIGHT-IN	3		
6	7102-058 (SH. 4)	LEFT INNER 80K COOLING PIPE, ASM	1		
5	7102-058 (SH. 1)	LEFT OUTER 80K COOLING PIPE, ASM	1		
4	7102-058 (SH. 6)	RIGHT INNER 80K COOLING PIPE, ASM	1		
3	7102-058 (SH. 3)	RIGHT OUTER 80K COOLING PIPE, ASM	1		
2	7102-094	ASSEMBLY, STEP 5	1		
1	7102-095 (Sh.1)	ASSEMBLY, STEP 6	X		

				ITEM		DWG. NO.		DESCRIPTION			G1		G2		G3		REMARKS		REV.							
											QUANTITY															
				PRINT DISTR.		PLOT DATE: 12/5/2007 CAD FILE NAME: 7102-095.idw																				
				CR-1		UNLESS OTHERWISE SPECIFIED:  DIMENSIONS ARE IN INCHES: TOLERANCES ON: .0 ± .02 .00 ± .010 .000 ± .005 FRACTIONS ± 1/32 ANGLES ± 0.5° ALL SURFACES 			 CORNELL UNIVERSITY Floyd R. Newman Laboratory Ithaca, NY 14853  ERL INJECTOR CRYOMODULE ASSEMBLY, STEP 6 ASSEMBLY, STEP 6: ORTHO VIEWS																	
7102-095		SH. NO. 1 OF 2																								
REV.						CHECKED BY: VM			DRAWN BY			DRAWN FOR			DATE			SCALE					7102-095		REV.	
						APPROVED BY: VM			vm			M.Liepe			10/25/07								SH. NO. 1 OF 2			

REVISIONS				
SYM.	ZONE	DESCRIPTION	DATE	APP.



	ITEM	DWG. NO.	DESCRIPTION			G1	G2	G3	REMARKS	REV.	
							QUANTITY				
  SH. NO. 2 OF 2	PRINT DISTR.	PLOT DATE: 12/5/07 CAD FILE NAME: 7102-095.idw									
	CR-1	UNLESS OTHERWISE SPECIFIED:  DIMENSIONS ARE IN INCHES: TOLERANCES ON: .0 ± .02 .00 ± .010 .000 ± .005 FRACTIONS ± 1/32 ANGLES ± 0.5° ALL SURFACES 		<div><div> LABORATORY FOR ELEMENTARY-PARTICLE PHYSICS</div><div>CORNELL UNIVERSITY Floyd R. Newman Laboratory Ithaca, NY 14853</div></div>							
			ERL INJECTOR CRYOMODULE ASSEMBLY, STEP 6 ASSEMBLY, STEP 6: ISO VIEWS								
	REV.	CHECKED BY: VM APPROVED BY: VM	DRAWN BY vm	DRAWN FOR M.Liepe	DATE 10/25/07	SCALE		7102-095 SH. NO. 2 OF 2		REV.	